



a relationship with earth
jenni ward

a relationship with earth

ceramic sculpture by
Jenni Ward

photographs by Paul Titangos

Jenni Ward is a sculptor, art instructor and owner of Earth Art Studio in Aptos CA. In 2005, she opened Earth Art Studio; a sculpture studio offering clay and mixed media sculpture classes and workshops for children, teens and adults. Throughout her teaching career she has worked extensively with many youth and senior art programs. She is also the creative engine behind the humanitarian group HOPE Art, which brings art to the youth of Haiti. In addition to teaching, she has been creating, showing and selling her own sculptures since graduating from University of Hartford-Hartford Art School with a Bachelor of Fine Arts degree in 1998. She exhibits her sculptures locally and nationally and is a participant in the Santa Cruz County Open Studios.





nest series













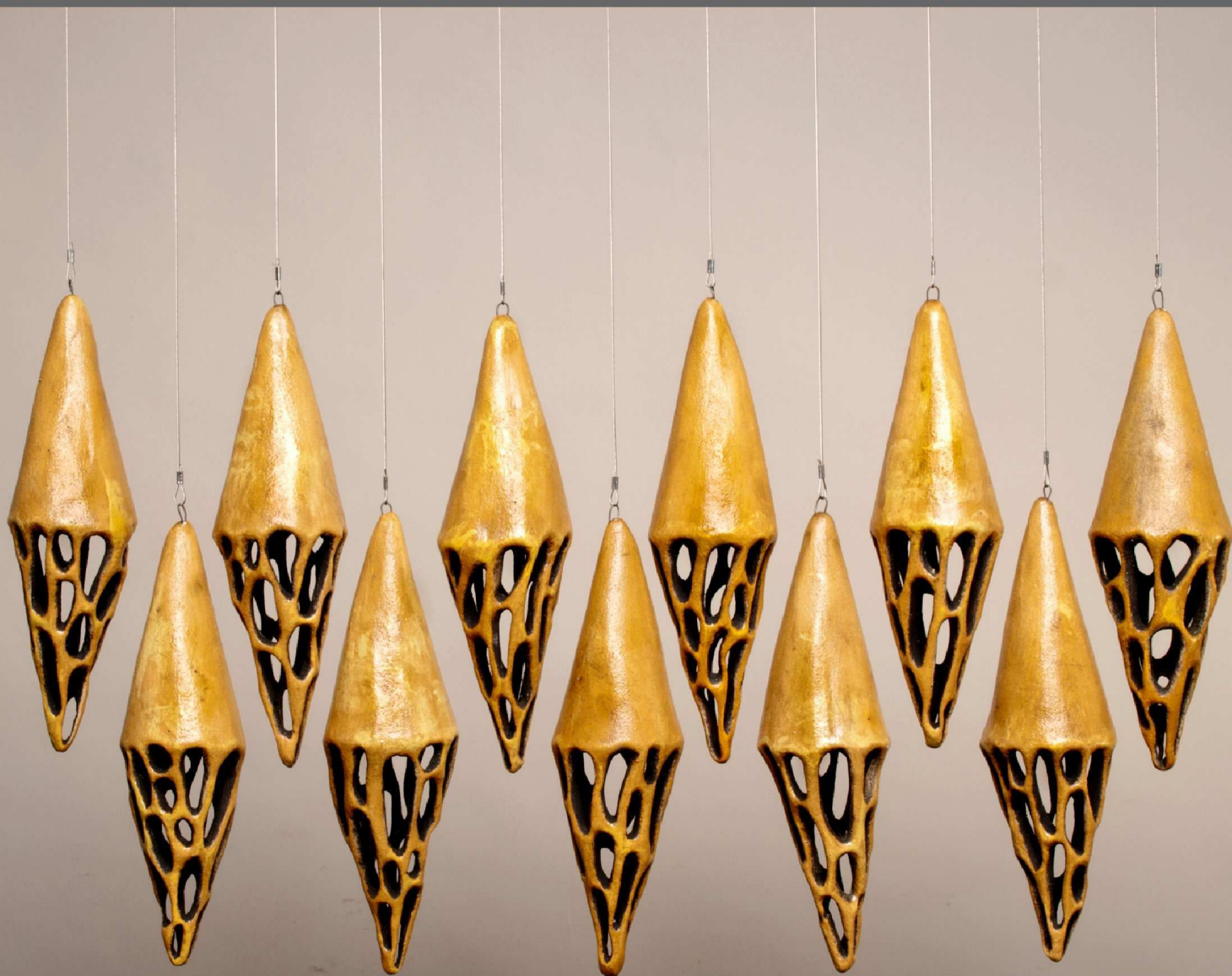






hive series

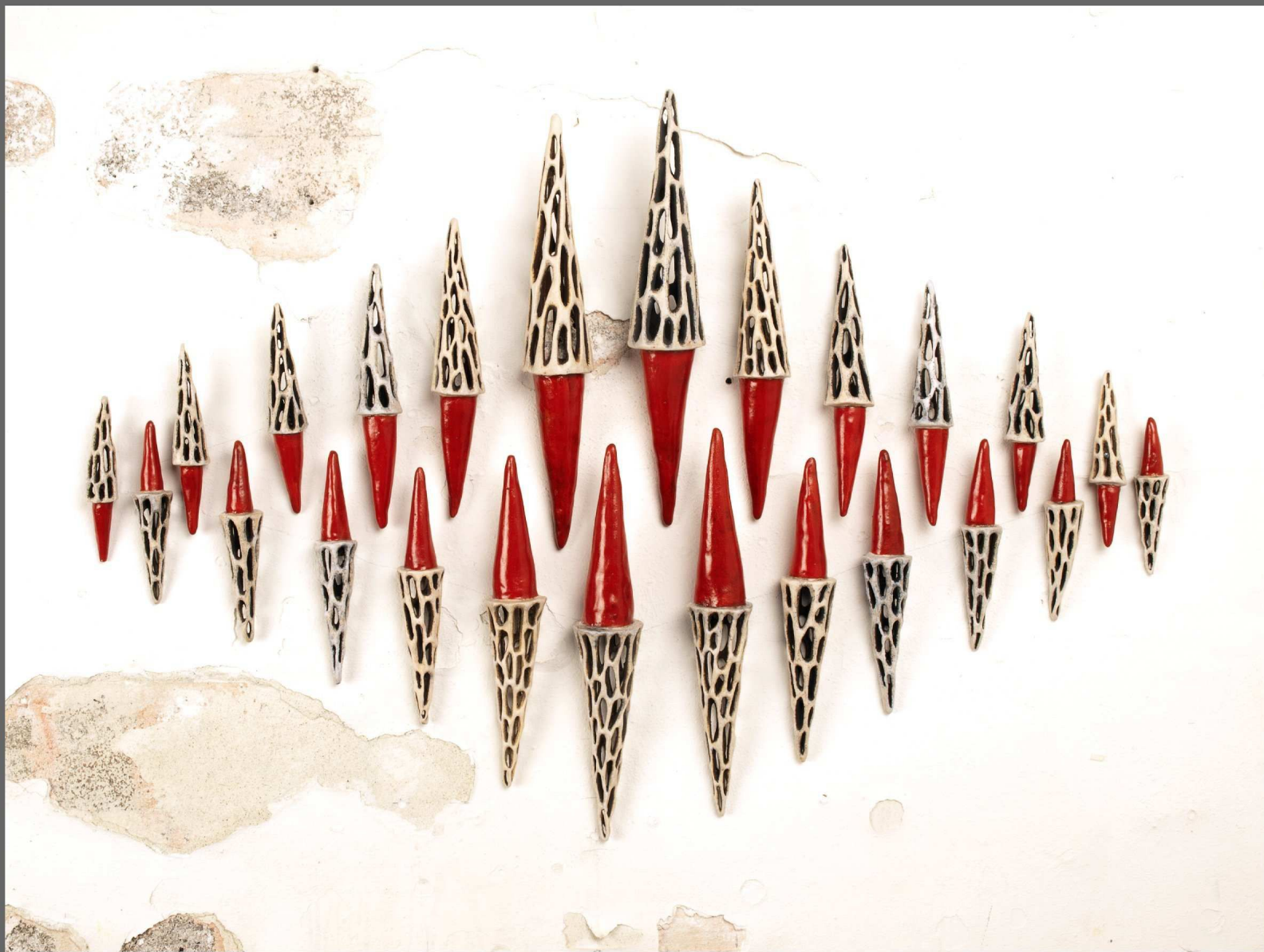


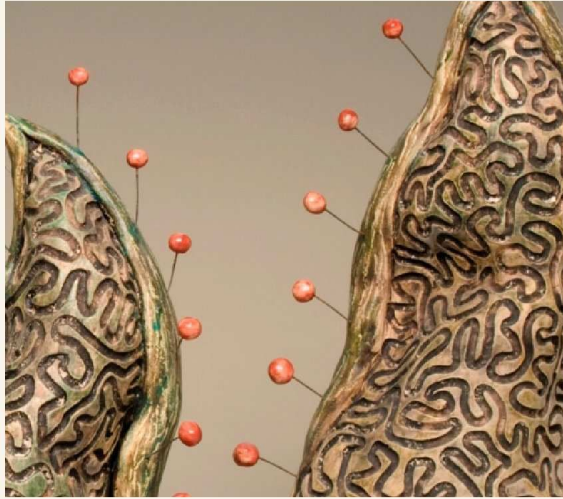




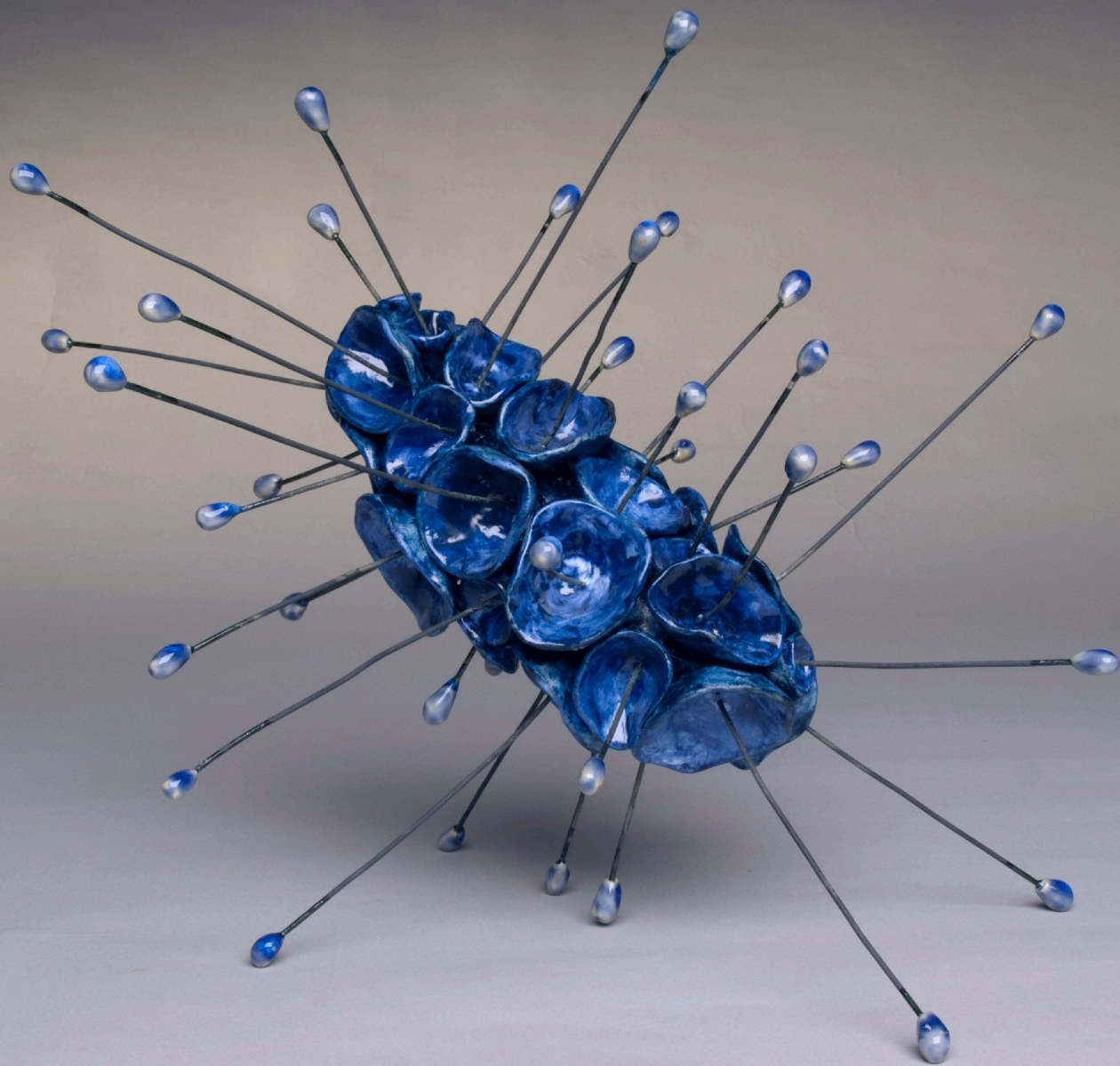


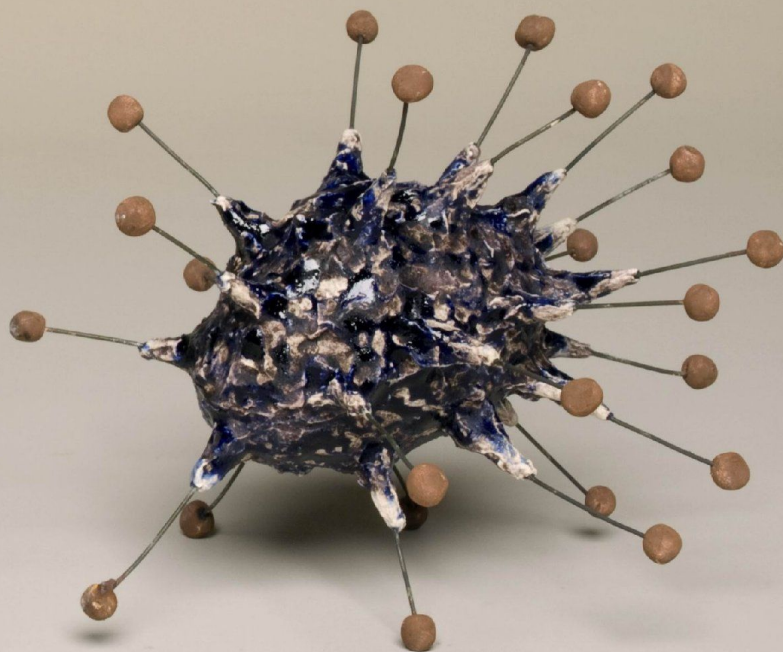






sprout series



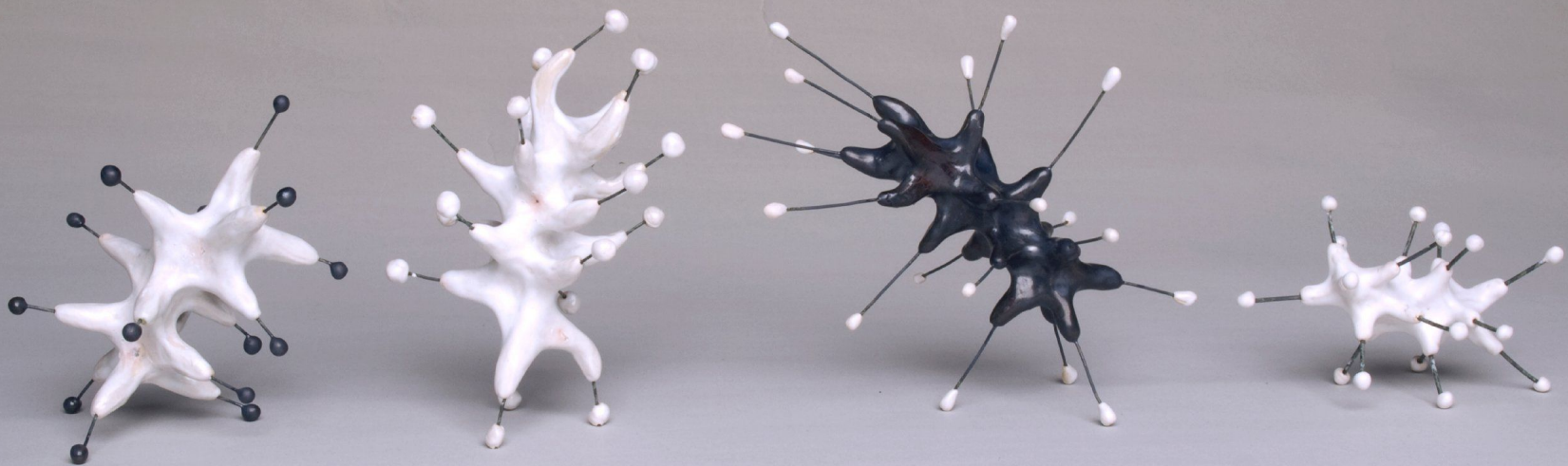








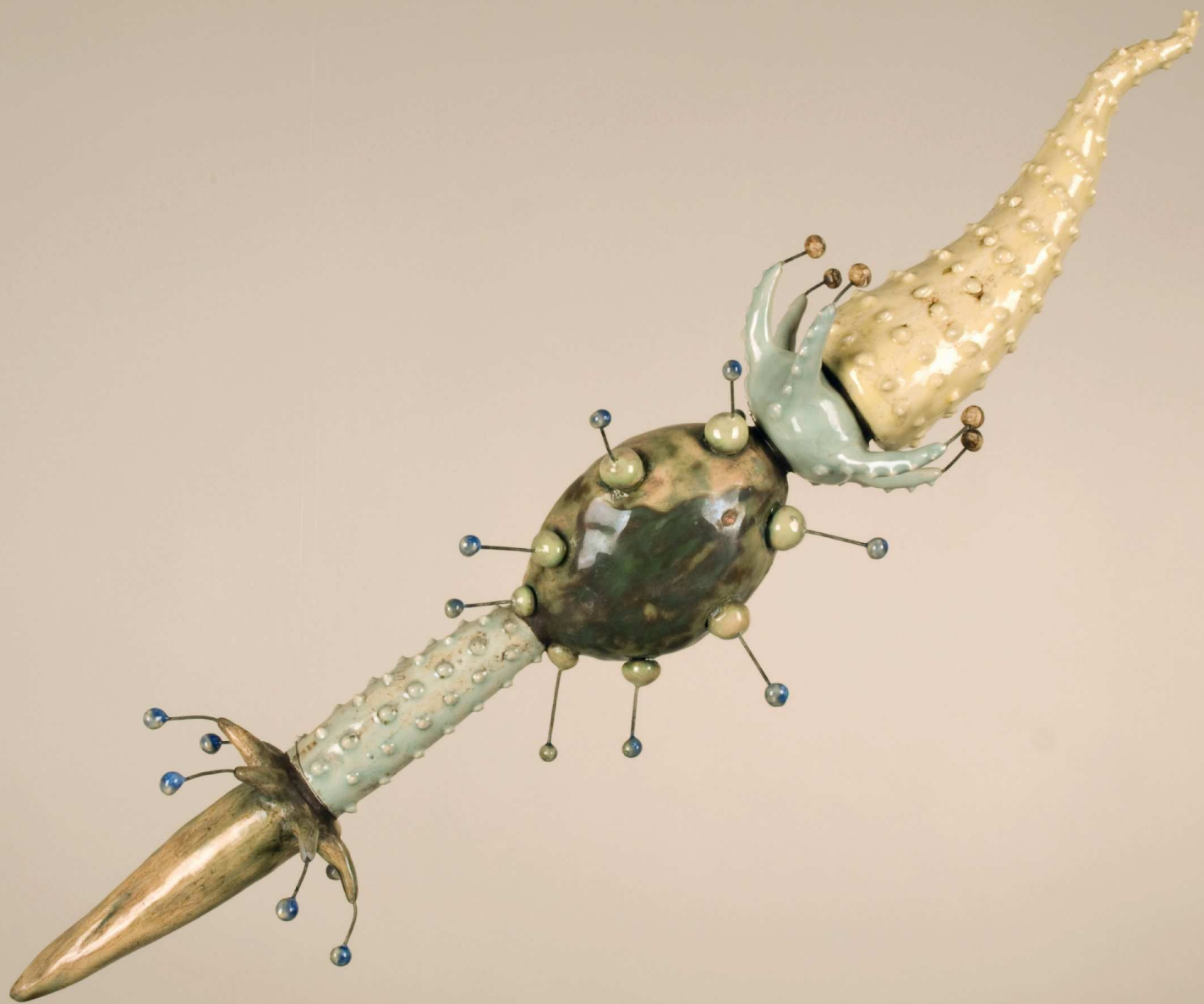








branch series

















nest series

image I
ceramic
10" x 11" x 11"
2010

image II
ceramic
10" x 10" x 10"
2010

image III
ceramic
13" x 7" x 7"
2011

image IV
ceramic & high temperature wire
12" x 10" x 8"
2010

image V
ceramic
14" x 8" x 8"
2011

image VI
ceramic
14" x 9" x 9"
2010

image VII
ceramic
10" x 15" x 10"
2010

image VIII
ceramic
9" x 16" x 9"
2010

hive series

image I
ceramic
12" x 34" x 3"
2010

image II
ceramic & wire
12" x 45" x 4"
2010

image III
ceramic & wire
26" x 10" x 10"
2011

image IV
ceramic & wire
26" x 10" x 10"
2011

image V
ceramic & wire
22" x 12" x 12"
2011

image VI
ceramic
24" x 40" x 4"
2011

sprout series

image I
ceramic & high temperature wire
15" x 12" x 12"
2010

image II
ceramic & high temperature wire
12" x 12" x 12" each
2010

image III
ceramic & high temperature wire
varied , ~10" x 10" x 10" each
2010

image IV
ceramic & high temperature wire
varied, ~10" x 10" x 10" each
2010

image V

ceramic, wire & steel

52" x 42" x 8"

2010

image VI

ceramic & high temperature wire

18" x 36" x 4"

2009

image VII

ceramic & high temperature wire

15" x 4" x 3"

2009

image VIII

ceramic & high temperature wire

8" x 3" x 3"

2009

branch series

image I

ceramic & high temperature wire

22" x 6" x 6"

2009

image II

ceramic & high temperature wire

26" x 10" x 10"

2009

image III

ceramic & high temperature wire

46" x 4" x 4"

2011

image IV

ceramic & high temperature wire

47" x 4" x 4"

2011

image V
ceramic & high temperature wire
42" x 8" x 8"
2011

image VI
ceramic & high temperature wire
48" x 5" x 5"
2011

image VII
ceramic & high temperature wire
54" x 8" x 8"
2011

image VIII (installation)
ceramic & high temperature wire
size varied
2011

front cover

hive series (detail)
ceramic
24" x 36" x 5"
2011

copyright page

nest series (installation)
ceramic
size varied
2011

back cover

sprout series (detail)
ceramic & high temperature wire
9" x 9" x 9"
2009

Jenni Ward
earth art studio
767 Cathedral Dr
Aptos CA 95003
831-818-9569

jenniwardart@gmail.com
www.jenniward.com



(c) 2011 Jenni Ward All rights reserved.
Photography: Paul Titangos www.titangos.com

The photographs and the works photographed are protected
by copyright and any copying is expressly prohibited.

ISBN: 978-0-615-55708-3



www.jenniward.com